

VLM500 Firmware Update

Procedure for a microcontroller firmware update

The VLM500 is equipped with a microcontroller. If there is a new firmware available the user can update the device on his own. In normal cases there is no need to send in the device for a service. The controller firmware update is done with the VLMTool provided by the manufacturer. Please check the ASTECH website to download and install the latest release of the VLMTool.

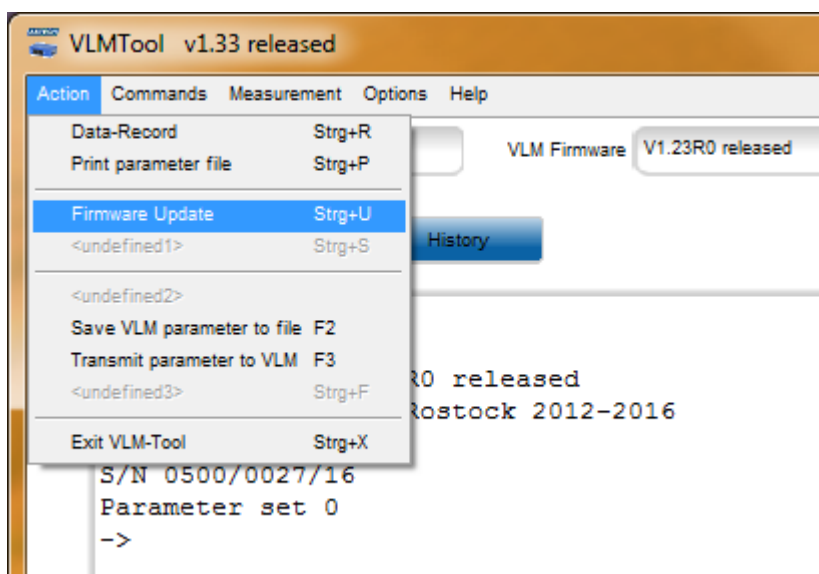


Preparation

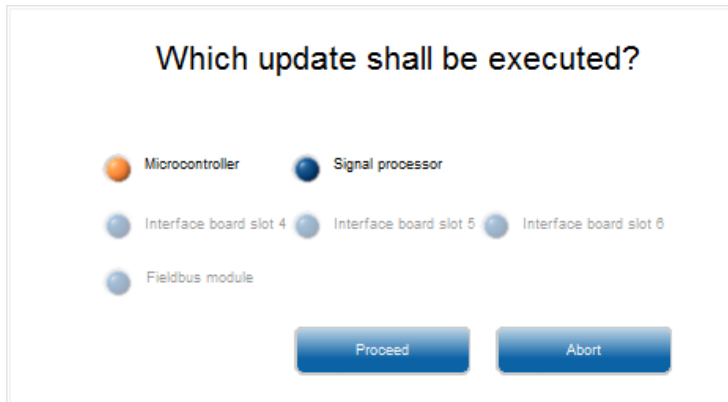
- Store the VLM500 firmware file to a directory of your choice. Preferably in the Windows user folder like „C:\Users\<<Username>\VLMTool\Firmware\“
- In case the firmware is zipped, unzip it first
- Connect the VLM500 to the PC/Laptop
- Power up the VLM500
- Run the VLMTool and establish a connection to the VLM500
- Check the current firmware version in the field “VLM firmware”
- **ATTENTION: During the whole update procedure the power supply must not be interrupted!**

Update procedure

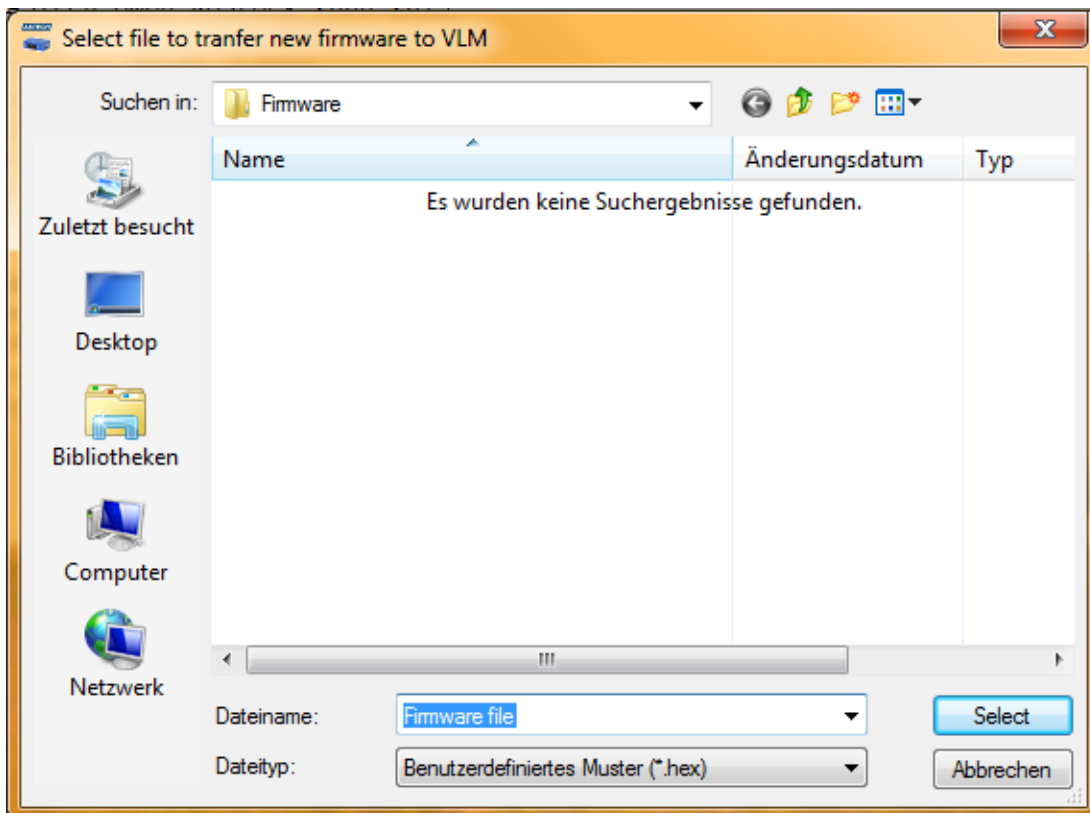
- Select from the menu “Action” the item “Firmware Update” or simply use the short cut “Ctrl + u”



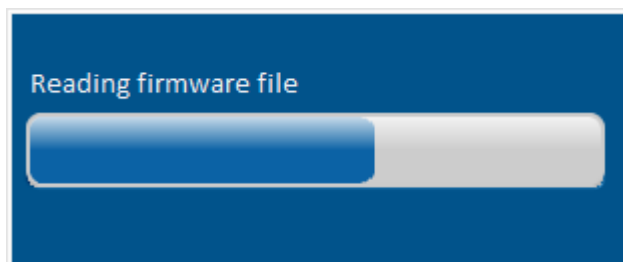
- A new window appears asking the user to define the update type. Please select “Microcontroller” and click the “Proceed” button



- A file selection dialog appears now
- Browse to the directory you stored the firmware file. Highlight it and then click the “Select” button

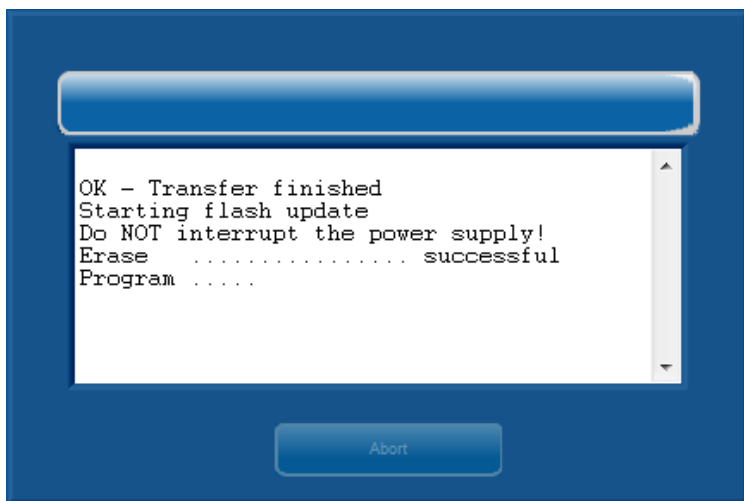


- The firmware file is being analyzed now

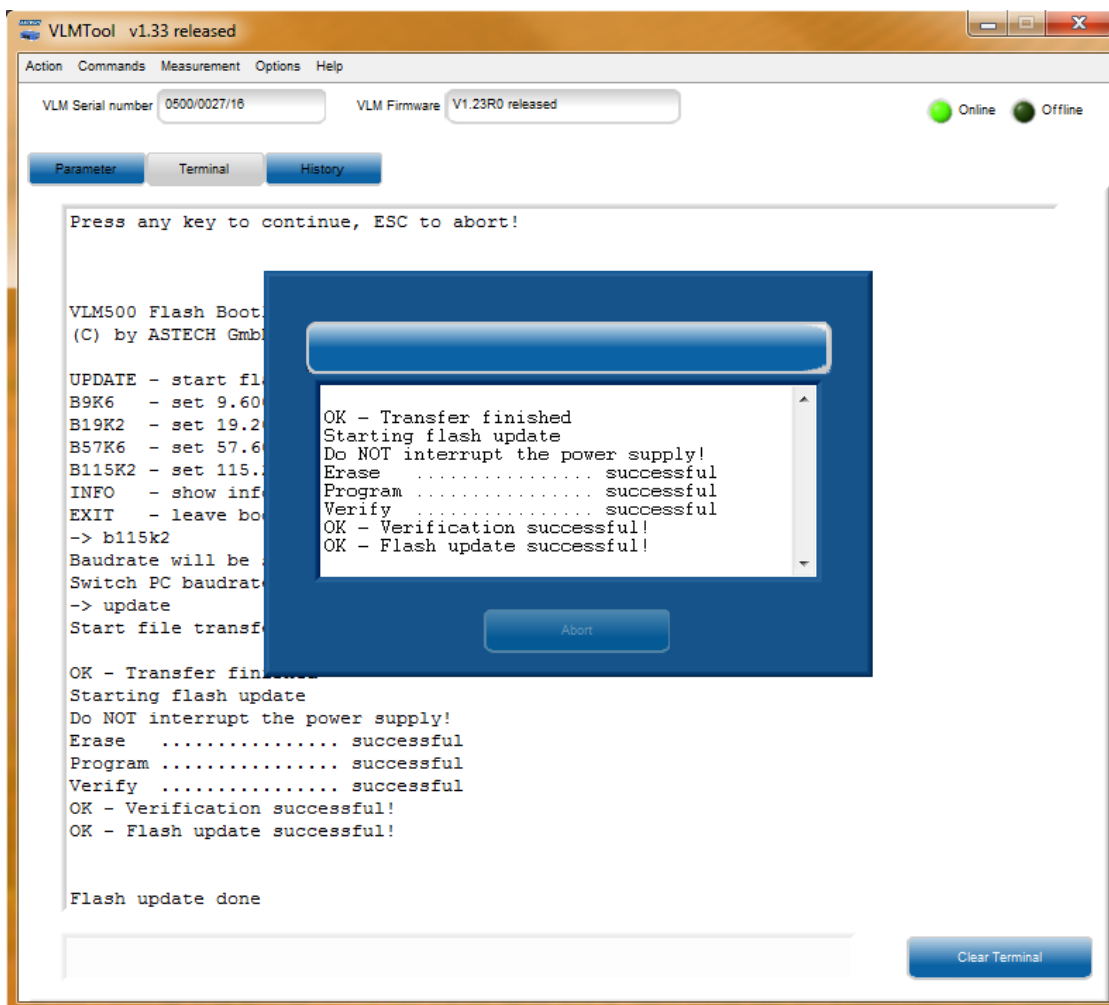


- After that, the file will be transferred to the VLM500

- When the transfer process has finished, the update itself is carried out inside the VLM500. The progress is shown in the window



- The update has finished, when the VLMTTool shows the message “OK – Flash update successful!”



- After the update the VLM500 restarts itself. The update information window disappears and the device is ready for use. Please check the new version in the “VLM firmware” field of the VLMTTool.